

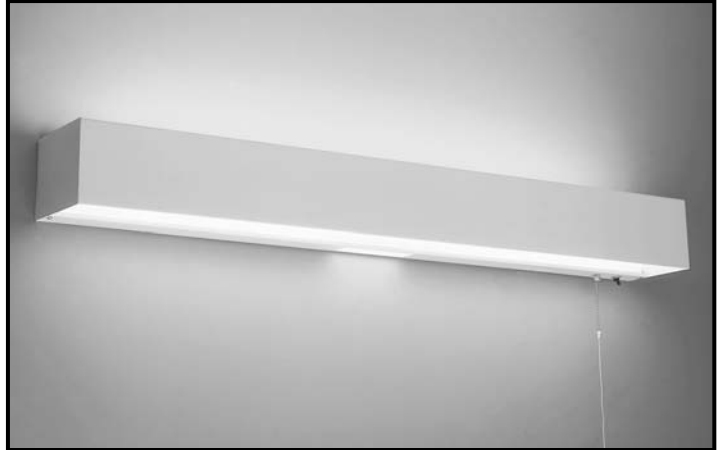
# BED 3' and 4'

## OVER-BED, WALL MOUNTED

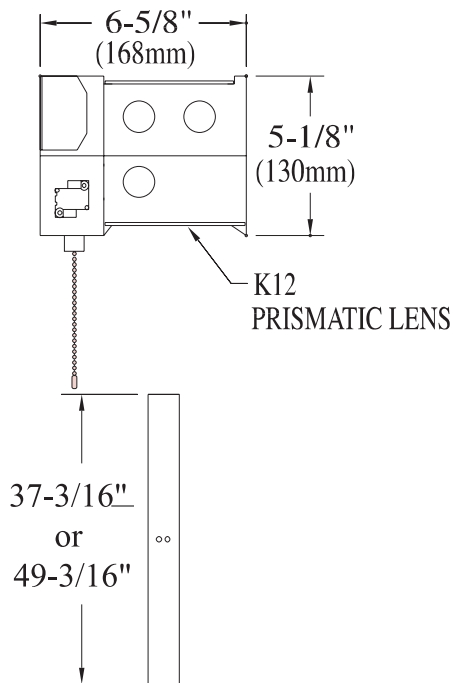
DIRECT / INDIRECT

2, 3 OR 4 T8 LAMP FLUORESCENT

- For nursing homes, hospitals and other healthcare facilities.
- Separate lamp compartments for controlled uplight and downlight.
- Four-way pull switch optional (120 volt only).
- Convenience outlet KO's optional for left or right assembly.
- 20 gauge steel body.
- Acrylic pattern 12 refractors.
- Semi-gloss, white acrylic baked enamel exterior finish standard.
- Spotweld construction.



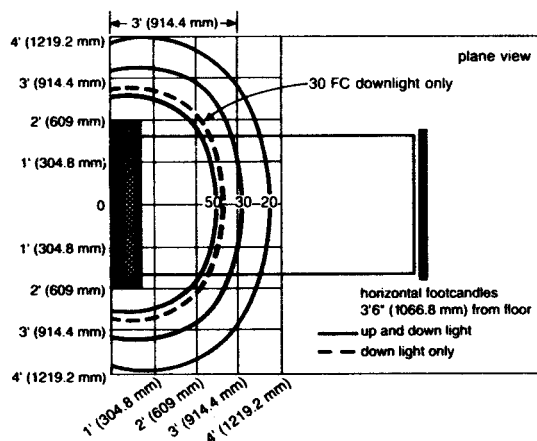
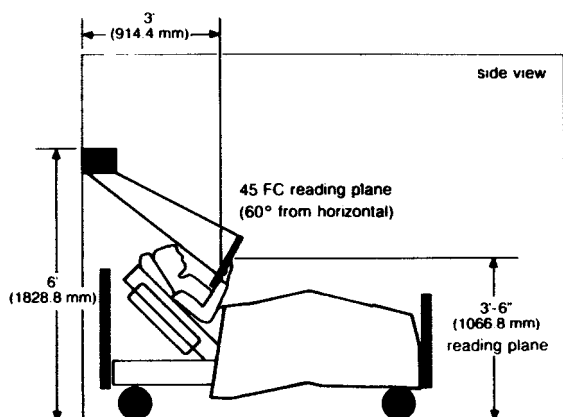
## DIMENSIONS



FIXTURE TYPE	VOLTS
JOB INFORMATION: _____	

# BED 3' and 4'

## BED OVER-BED, WALL MOUNTED



### ORDERING INFORMATION Explanation of Catalogue Number Example: BED432120SO

**BED**

**BED**  
Over-bed  
Wall-mounted  
Direct-indirect

**4**

**NUMBER OF LAMPS:**  
2=1 up/1 down  
3=2 up/1 down  
4=2 up/2 down

**32**

**LAMP/FIXTURE LENGTH/WATT:**  
25=nominal 36"  
25W T5  
32=nominal 48"  
32W T5

**OG SO**

**BALLAST TYPE:**  
Mag. T8  
Elect. T8

**OPTIONS:**  
Add appropriate suffix  
to catalog no.

### OPTIONS/ACCESSORIES

**RADIO INTERFERENCE FILTER** 120, 277, 347 volt, 50 or 60 Hz. Suffix: **R**.

#### NIGHT LIGHT†

Incandescent, down section : **NID** ; up section **NIU**.  
Fluorescent, down section : **NPD** ; up section **NPU**.

#### PULL SWITCH†

2 way switch Left side : **S2L**,  
4 way switch Left side : **S4L**,  
Right side : **S2R** or **S4R**.

#### CONVENIENCE† OUTLET

Left side **COL**, Right side **COR**.  
†Accessories, 120V only.

### SPECIFICATIONS:

**MATERIALS:** Chassis parts are die-formed code gauge cold rolled steel. Refractor—one-piece virgin acrylic.

**FINISH:** Chassis exterior—white baked acrylic enamel. Cavity—white baked acrylic enamel minimum 86% reflectance. Phosphate undercoating.

**REFRACTOR:** One-piece injection molded full re-entrant virgin acrylic with Catadioptric sides, ends and wall design with diamond sharp square base male conical prisms on horizontal surface.

**ELECTRICAL:** Thermally protected class "P" ballast C.B.M. approved, non PCB. If K.O. is within 3" of ballast, use wire suitable for at least 90°.

**LABELS:** Listed by CSA.

We reserve the right to change, materials and finish in any way that will not alter installed appearance or reduce function and performance.

**CFI FLUORESCENT**

CANLITE

525 EDUCATION RD., CORNWALL, ONTARIO K6H 6C7  
TEL.: (613) 938-6221 • FAX: (613) 938-0961